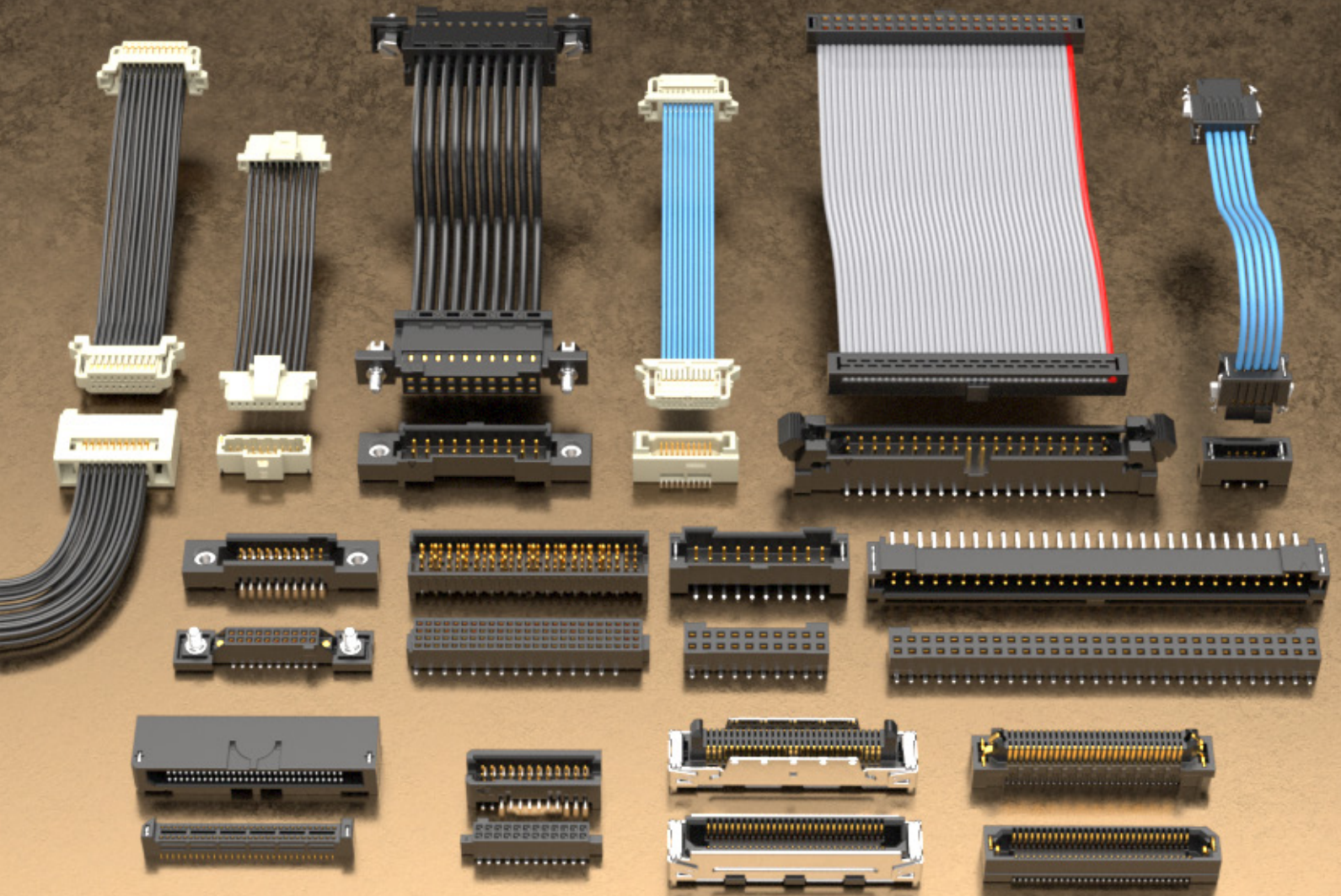




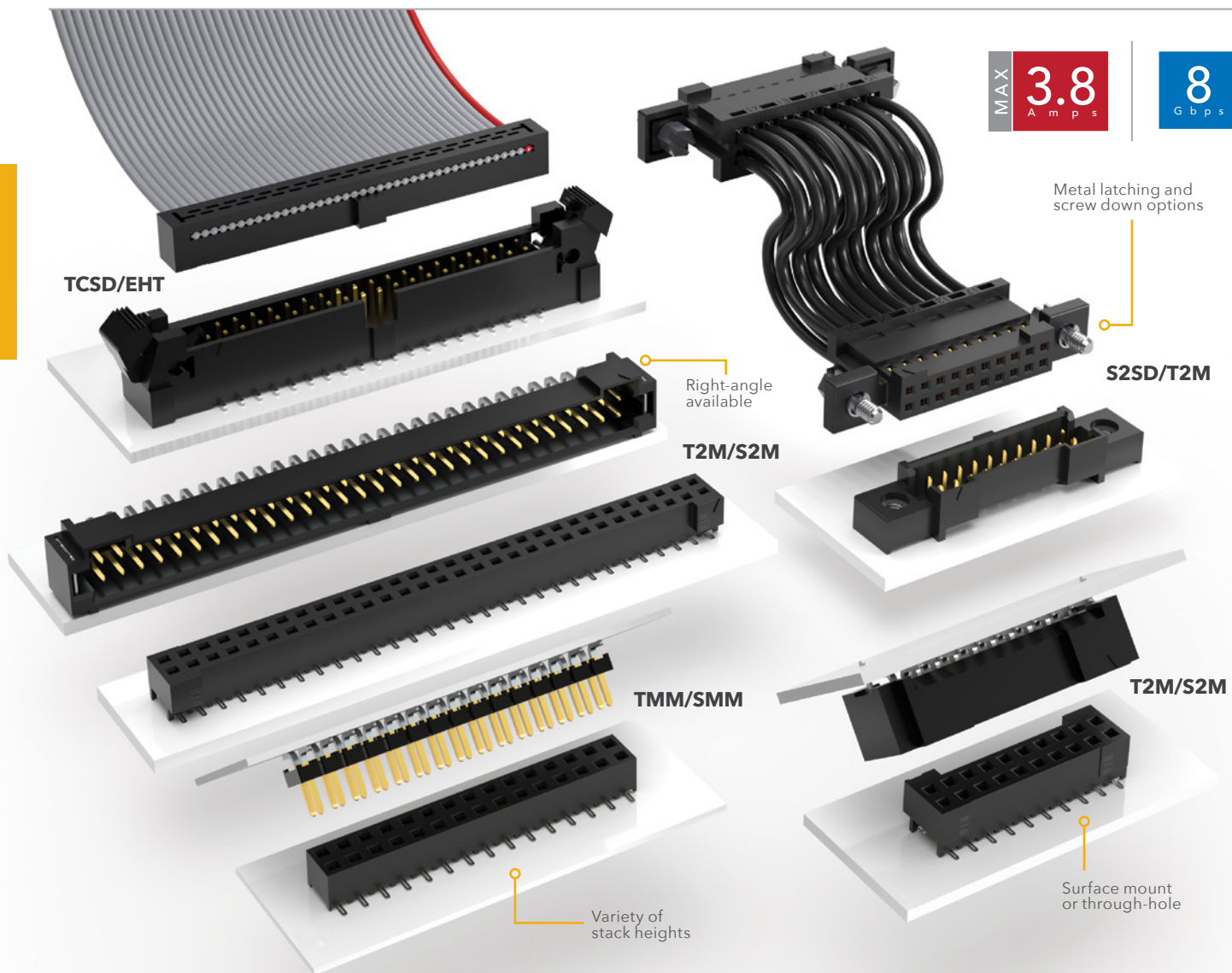
# RUGGED CONTACT SYSTEMS





# RUGGED TIGER EYE™ SYSTEMS

HIGH-RELIABILITY • MULTI-FINGER BeCu CONTACT • HIGH MATING CYCLES

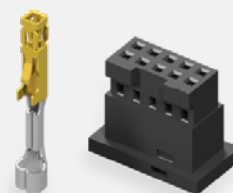


## 2.00 mm PITCH TIGER EYE™

- Tiger Eye™ is Samtec's most rugged contact system rated to 1,000+ mating cycles
- Wide range of stack heights
- Right-angle mating headers available
- Optional screw downs, weld tabs and locking clips
- Discrete wire assemblies available in 24-30 AWG PVC or Teflon® wire; contact [asp@samtec.com](mailto:asp@samtec.com) for custom solutions



Optional strain relief and variety of wiring options

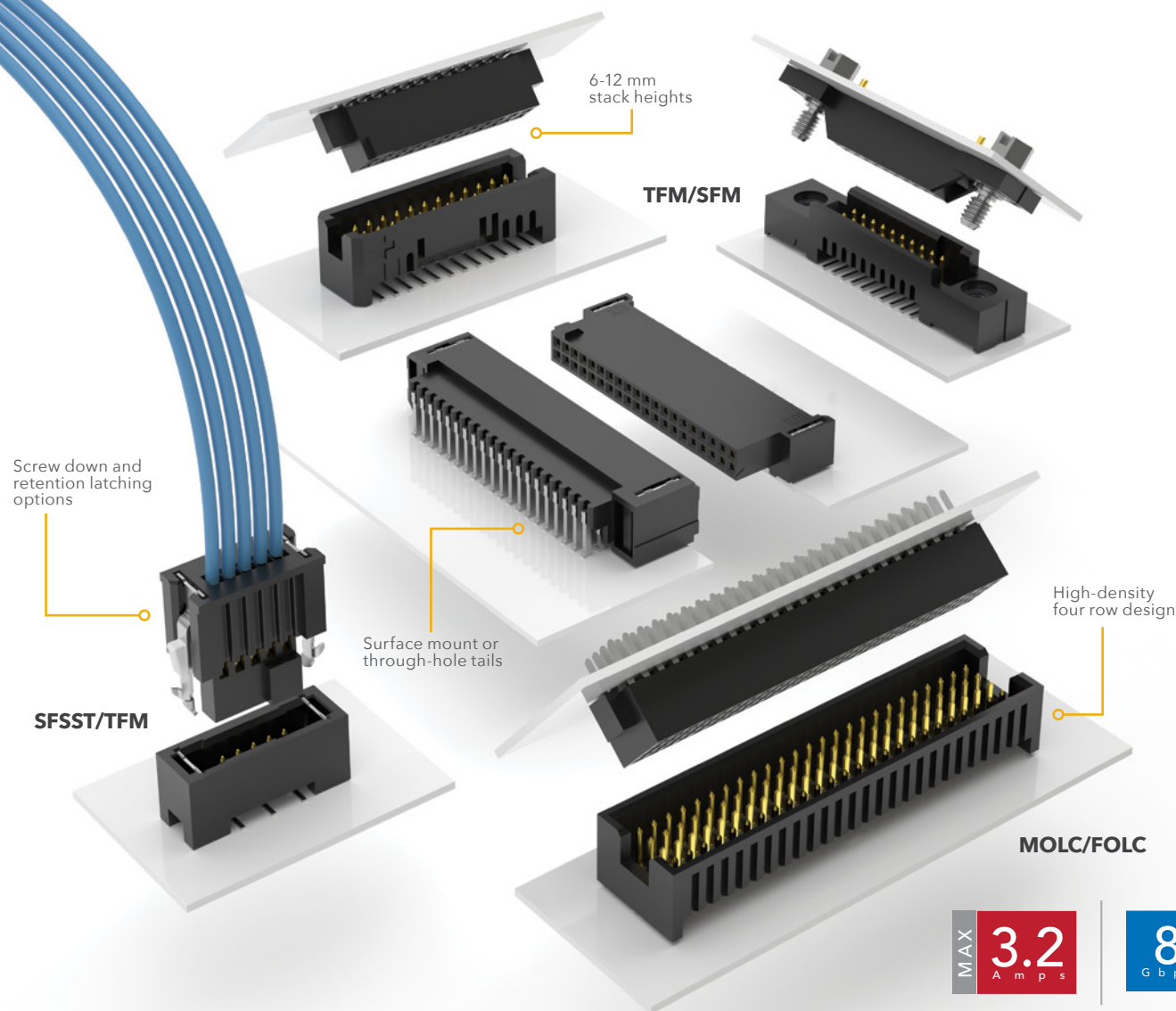


Components (ISD2/CC81) & tooling available: [samtec.com/tooling](http://samtec.com/tooling)



## TIGER EYE™ CONTACT SYSTEM

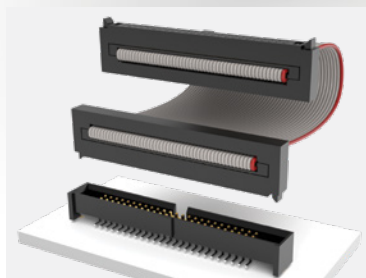
- Multi-finger design with several points of contact for high-reliability
- Smooth, flat mating area increases mating cycles and lowers contact resistance
- Heat-treated BeCu for the best combination of mechanical and electrical properties
- Surface mount, micro slot tail increases solder surface area for higher joint strength



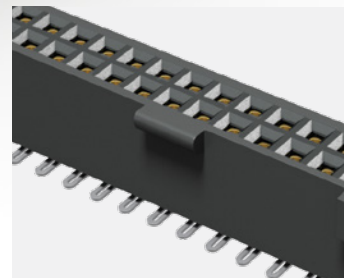
## 1.27 mm PITCH TIGER EYE™

- Screw down, locking clip, friction latching and weld tab ruggedizing options
- Discrete wire assemblies available in single or double row, 28 and 30 AWG PVC or Teflon® wire; contact [asp@samtec.com](mailto:asp@samtec.com) for custom solutions
- Cable components (ISDF/CC03) and tooling available

Dupont™ Teflon® is a registered trademark of the E.I. du Pont de Nemours and Company or its affiliates.



IDC cable assemblies with rugged strain relief (FFSD/FFMD, FFTP/FMTP)



Locking for increased unmating force (SFML/TFML)

# RUGGED TIGER EYE™ SYSTEMS

HIGH-RELIABILITY • MULTI-FINGER BeCu CONTACT • HIGH MATING CYCLES

## 0.80 mm PITCH TIGER EYE™

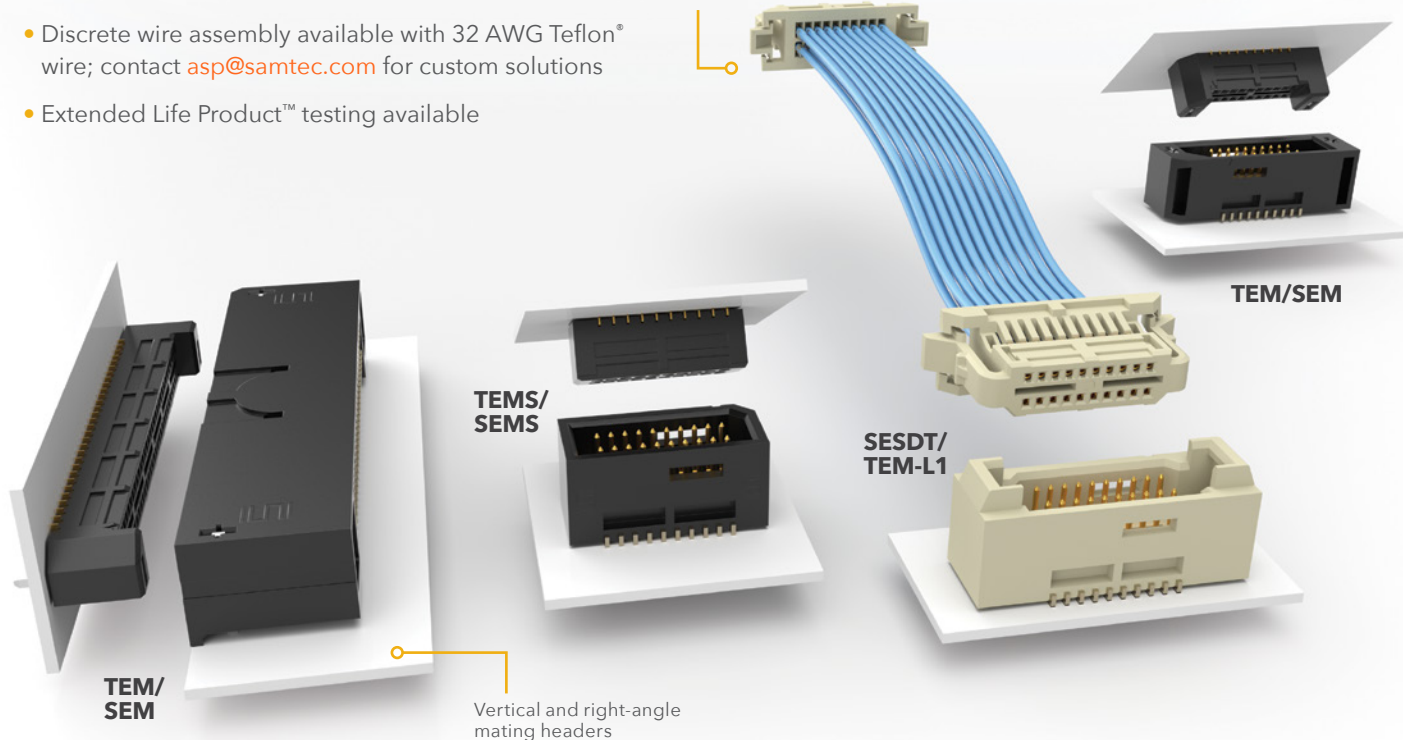
- Micro pitch and slim body for space-savings
- 6 mm, 7 mm and 10 mm stack heights
- Locking clip, alignment pins and weld tab ruggedizing features
- Discrete wire assembly available with 32 AWG Teflon® wire; contact [asp@samtec.com](mailto:asp@samtec.com) for custom solutions
- Extended Life Product™ testing available



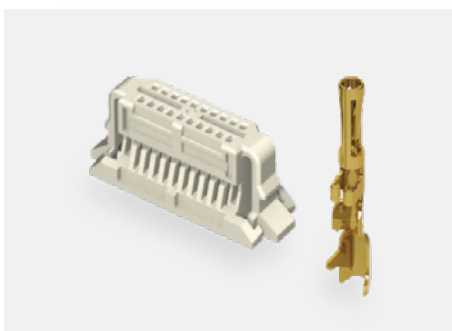
Rugged latching system for increased withdrawal force

MAX  
2.9  
A m p s

8  
G b p s



Locking for increased unmating force (SEML)



Components (ISDE/CC396) and tooling available: [samtec.com/tooling](http://samtec.com/tooling)



Compatible with UMPT/UMPS for power/signal flexibility

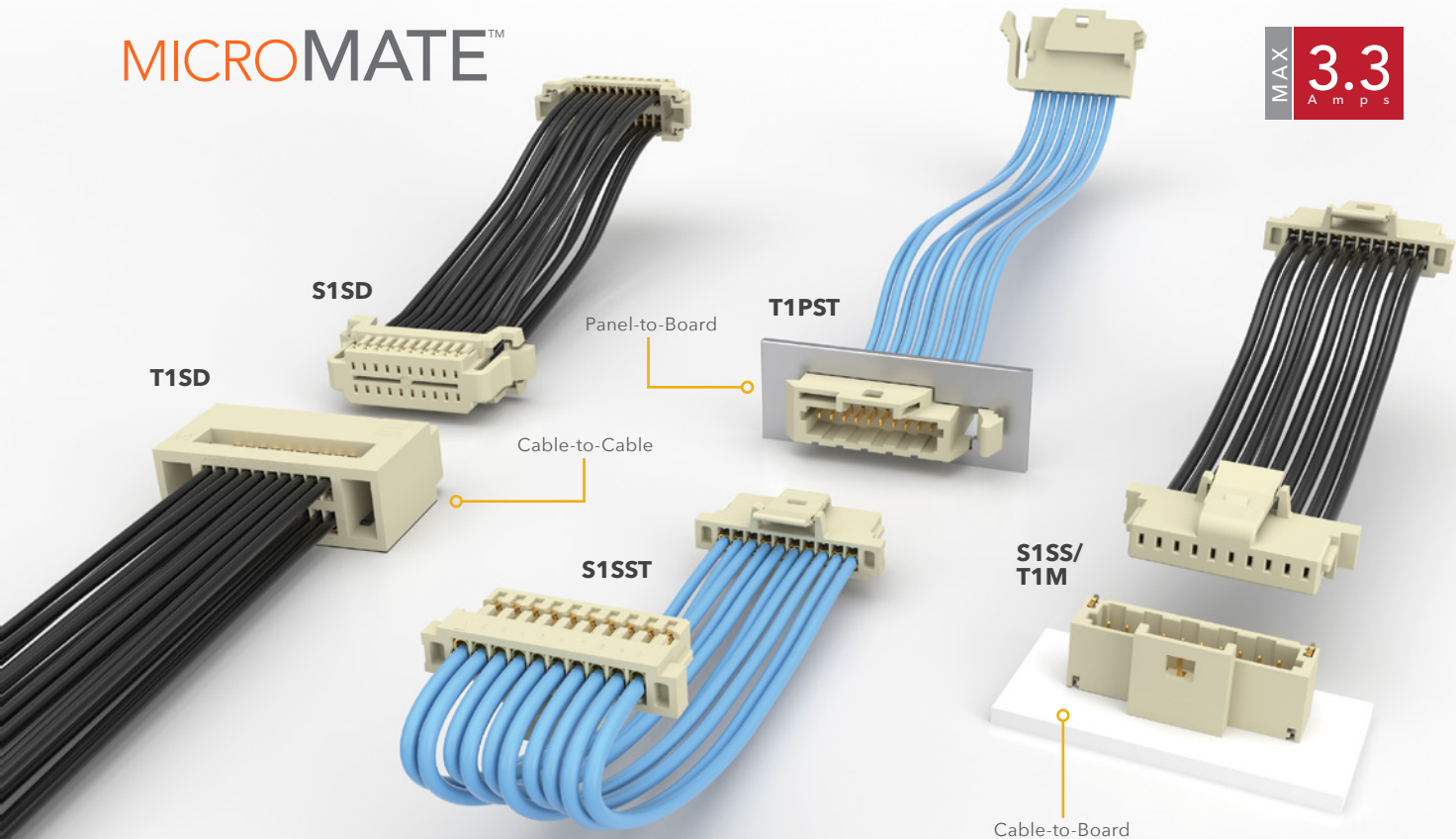


# RUGGED MICRO MATE™ SYSTEMS

SPACE-SAVING • DESIGN FLEXIBILITY • HIGH-RELIABILITY

MICROMATE™

MAX  
3.3  
A m p s



## 1.00 mm PITCH MICRO MATE™ SYSTEMS

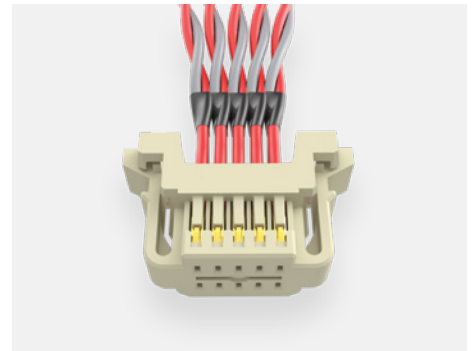
- Crimp-style dual leaf contact system for reliable wire-to-board connection
- Rugged positive latching for increased retention
- 28 and 30 AWG wire options in PVC or Teflon®
- Socket or terminal, single or double row assemblies
- Vertical and right-angle mating headers



Dual leaf contact system  
for a reliable connection



Components (ISS1, ISD1/CC09; IST1, IDT1,  
ISP1, IDP1/TC37) and tooling available:  
[samtec.com/tooling](http://samtec.com/tooling)



Custom solutions available  
(twisted pair cable shown);  
contact [asp@samtec.com](mailto:asp@samtec.com)

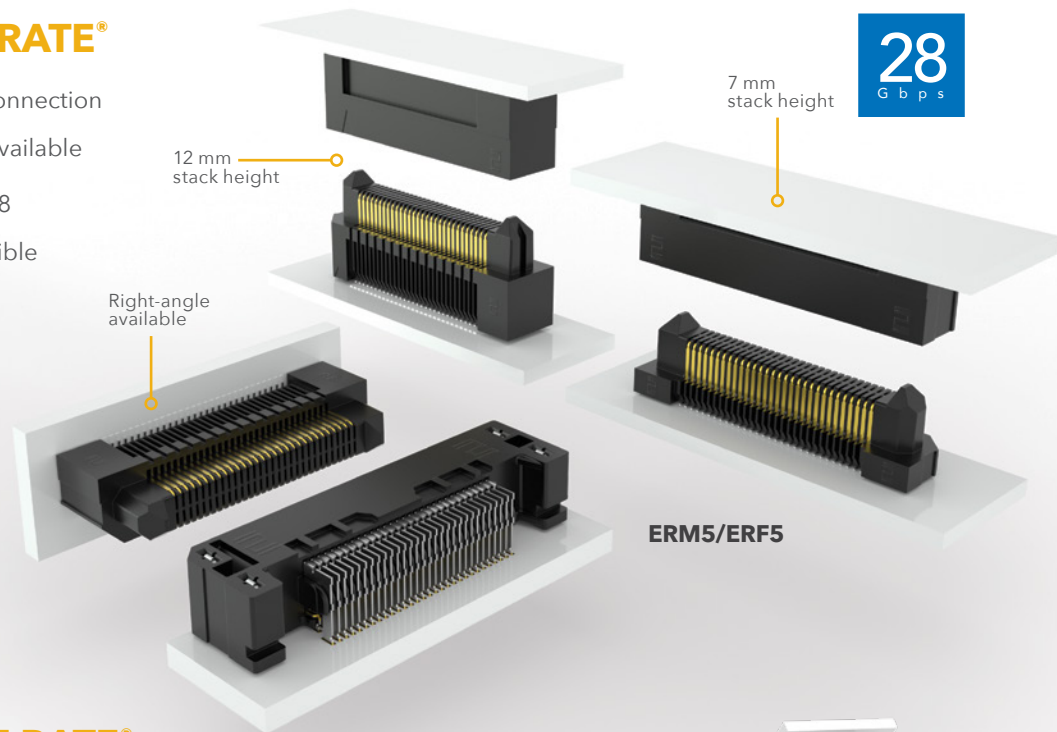
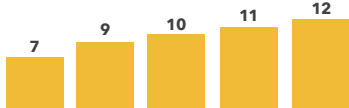
# RUGGED EDGE RATE<sup>®</sup> SYSTEMS

OPTIMIZED FOR SI PERFORMANCE • INCREASED CONTACT WIPE • HIGH CYCLES

## 0.50 mm PITCH EDGE RATE<sup>®</sup>

- 1.00 mm contact wipe for a reliable connection
- Rugged friction locks and weld tabs available
- Up to 40% PCB savings vs. ERM8/ERF8
- Compatible with UMPT/UMPS for flexible power/signal solutions

Stack Height Flexibility (in mm)



## 0.635 mm PITCH EDGE RATE<sup>®</sup>

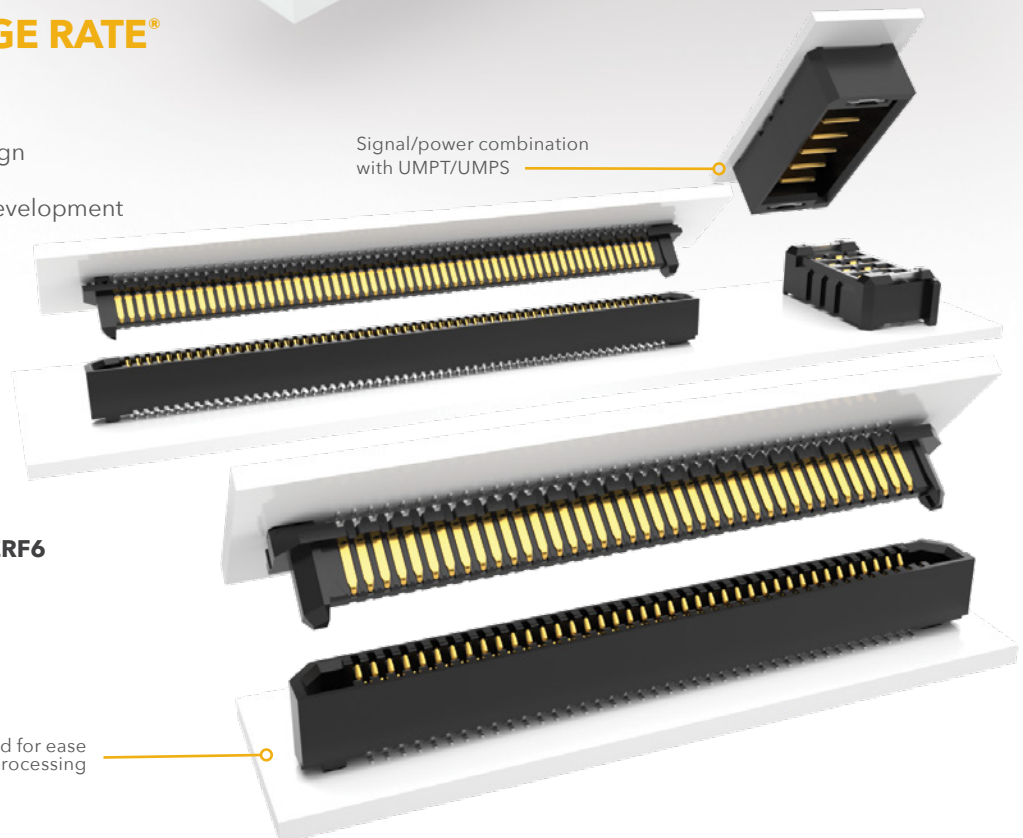
- Extremely slim 2.5 mm body width
- Up to 120 positions in a 2-row design
- 5 mm stack height with others in development
- Compatible with UMPT/UMPS for flexible power/signal solutions

PAM4

56  
G b p s

ERM6/ERF6

J lead for ease  
of processing





## EDGE RATE® CONTACT SYSTEM

- Smooth milled mating surface reduces wear and increases durability
- Lower insertion and withdrawal forces
- Robust when “zippered” during unmating
- Minimized parallel surface area reduces broadside coupling and crosstalk
- Designed, simulated and optimized for 50  $\Omega$  and 100  $\Omega$  systems



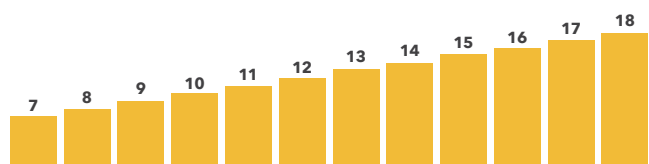
## 0.80 mm PITCH EDGE RATE®

- 1.50 mm extended wipe
- Rugged metal latching for increased retention force
- 360° shielding option reduces EMI
- Compatible with UMPT/UMPS for flexible power/signal solutions
- Cost-effective metal solder lock in development for a more secure connection to the board

28  
Gbps

Mating Cable Assemblies  
(ERCD/ERDP Series)

Stack Height Flexibility (in mm)





**samtec**  
SUDDEN SERVICE®

UNITED STATES • NORTHERN CALIFORNIA • SOUTHERN CALIFORNIA • SOUTH AMERICA • UNITED KINGDOM  
GERMANY • FRANCE • ITALY • NORDIC/BALTIC • BENELUX • ISRAEL • INDIA • AUSTRALIA / NEW ZEALAND  
SINGAPORE • JAPAN • CHINA • TAIWAN • HONG KONG • KOREA

**[samtec.com/rugged](http://samtec.com/rugged)**