

**Your partner for
automation solutions**



Our product is your solution

ROSE Systemtechnik GmbH

In association with Phoenix Mecano AG, Switzerland, we develop and manufacture high-quality industrial enclosures and system solutions for the sectors of mechanical and plant engineering, automation engineering, potentially explosive atmospheres, instrumentation, control and automation technology, and also for the foodstuffs and beverages industry.

Our business success is founded on a wide range of products, a high quality standard, constant innovation and an exceptional level of service. You decide the delivery condition – the unmachined enclosure, a partial assembly or a completely assembled and tested customised system solution.



CRE Rösler Electronic GmbH

For over 40 years, CRE Rösler Electronic has been a leading supplier of automation solutions capable of handling any application in machine and process automation. Our product portfolio not only offers robust and reliable panel PCs, industrial PCs and industrial monitors, but also comprehensive solutions for drive, control and safety technology through to visualization and process control.

On August 1st, 2019 ROSE took over the CRE Rösler Electronic completely. With the HMI *CREations* product line, we offer you new possibilities in the design of the human-machine interface. From suspension system to control enclosures to the high-performance IPC, we offer everything from a single source and everything made in Germany!

Get a whole new experience with ROSE and HMI *CREation*!

HMI **CRE**ATIONS



Our product is your solution

Content

HMI <i>CREATIONS</i>	S-Line – Industrial Panel PCs / Monitors	6
	CS-Line – Stainless Steel Panel PCs / Monitors	10
	Eco-Line	14
	Front-mounted Panel PCs / Monitors	16
	Modular PC Systems	20
	Mobile Industrial PCs / Tablets	24
	Industrial PCs and Embedded PC Systems	26
	Complete Systems	28
	Customised Solutions	30
HMI <i>MECHANICS</i>	Quick-release Mechanism „QuickLock“	34
	Control Enclosures	36
	Suspension Systems	40
	Accessories	46
	Branch Solutions	48
	Display Technology	50
	Contact	51







Our product is your solution

Complete solutions - everything from one source and „Made in Germany“

The ROSE Systemtechnik HMI portfolio does not only offer individual enclosure solutions, but also robust and reliable panel PCs, industrial PCs and industrial monitors, also comprehensive solutions for drive, control and safety technology up to visualization and process control. With the acquisition of CRE Rösler Electronic GmbH in Hohenlockstedt, ROSE Systemtechnik has consistently advanced the step towards becoming a system supplier. The experts from Hohenlockstedt have more than 40 years of experience and continue to be your contact in Northern Germany. Customer specific solutions are our daily business. We at ROSE know about your challenges and demands in the automation industry and also know that they are never the same. This is the reason why we guide you from the very beginning of a project and offer the solution that is right for you. Trust in our specialists and enjoy peace of mind on our shared journey towards Industry 4.0!

We equip our industrial PC systems with high-quality components with guaranteed long-term availability. Our stringent quality control includes burn-in endurance testing with full record-keeping and quality management with end-to-end documentation as standard – for each and every panel PC or industrial monitor.



Service

- Perfectly coordinated, integrated solution models
- Software integration
- Hardware upgrade as needed
- 24-hour burn-in endurance testing
- Completion of or help with your device certification
- Everything from a single source, 'Made in Germany'



Support

- Direct contact to a service technician
- Fast and friendly assistance for technical problems
- Professional hardware support
- Straightforward, no-quibble repair policy
- Personalised customer after-sales service







Our product is your solution

S-Line – Industrial Panel-PCs / Monitors

Perfect Panel PCs – our contribution to Industry 4.0

Our product range offers a wide choice of industrial panel PCs that are made-to-measure to match customer-specific requirements. One example is the 'S-Line' industrial panel PC, which uses a modular form factor and combines ingenious technology with an elegant design.

Enclosed in robust aluminium enclosure, the units offer IP65 protection on all sides, feature a protrusion-free, easy-to-clean all-glass surface and are designed for use directly in the field. Thanks to its outstanding flexibility, 'S-Line' series industrial panel PCs can be used for user control, programming, visualisation, long-term archiving and process simulation in all areas of automation, and can also be combined with conventional industrial control systems or PLCs.

Whether you need a panel PC or an industrial monitor – our 'S-Line' is available in touch, multi-touch and/or keyboard models, and in various display sizes. All models, from custom builds to high-volume production units, can be used in the harshest of environments.







Our product is your solution

S-Line – Industrial Panel PCs / Monitors



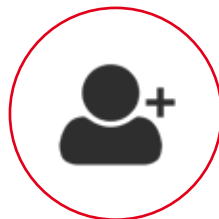
Technical Data

- Long-term availability of components
- Service-friendly layout
- CPUs up to latest-generation Intel Core i7
- Fanless PC integration
- 230V AC / 24V DC operating voltage
- Power consumption starts at just 20 W
- Wide range of operating systems
- Enclosure with 27 mm or 45 mm depth



Display

- 15", 19", 21,5", 24", 42" - other sizes on request
- Resistive or industry-optimised PCAP touch
- Multi-touch 'EagleEtch' screen – anti-glare glass
- Usable while wearing gloves
- Can be cleaned while running
- LED backlight
- High luminous transmission
- Wide viewing angles (horizontal / vertical)



Options

- RFID scanner
- 2D scanner
- Euchner scanner
- Bluetooth, WLAN
- Acoustic touch feedback
- Capacitive soft keys – custom layouts and lighting possible
- Conventional buttons, emergency stop
- Uninterruptible power supply
- Resistive touchscreen
- Interface extensions
- Bussystems (Profinet, Arcnet, IO-Link, etc.)







Our product is your solution

CS-Line – Stainless Steel Panel-PCs / Monitors

Stainless steel panel PC with IP69 **– perfect prerequisite for diverse areas of usage**

The stainless steel panel PC offers a perfect example of combining a rugged build with a stylish design. Thanks to the IP69K rating, the PCs are completely dust-tight and can be high-pressure steamcleaned – even while they are still running. This makes our devices ideally suited for use in chemical, pharmaceutical, hygiene and food applications.

To meet this objective of achieving first-class safety we can also certify Ex Zone 2 and 22 if required.

Our stainless steel panel PCs and monitors meet the most challenging requirements for protection and functionality. When compared with painted or powder-coated materials, stainless steel offers better corrosion resistance and has excellent characteristics in terms of hygiene.

The enclosure, which is sealed to offer maximum protection against soiling, is also easy and straightforward to clean, since this means panel PCs are unaffected by water and disinfectants (even acids and bases). By using a VESA mount or stainless steel flange, the PC can be quickly and securely mounted on any industry-standard suspension arm systems, stands or other fixing systems.







Our product is your solution

CS-Line – Stainless Steel Panel-PCs / Monitors



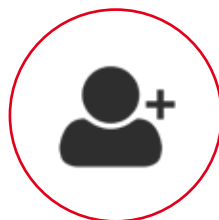
Technical Data

- Long-term availability of PC components
- Passively cooled design
- Service-friendly layout
- CPUs up to latest-generation Core i7
- Expandable interfaces
- 230V AC / 24V DC operating voltage
- Power consumption starts at just 20 W
- Various operating systems
- Hygienic, food-certified seals
- No condensation due to special membrane



Display

- Display sizes: 15", 19", 21.5", 24", 42"
special sizes on request
- Industry-optimised PCAP touch
- Multi-touch glass - chemically anti-reflective and hardened
- Glove operable, interference suppression
- Can be cleaned while running
- LED backlight
- High luminous transmission
- Wide viewing angles (horizontal / vertical)



Options

- RFID-scanner
- Bluetooth / WLAN
- Acoustic touch feedback
- Capacitive soft keys – custom layouts and lighting possible
- Conventional buttons, emergency stop
- Uninterruptible power supply
- Interface extensions
- Bussystems (Profinet, Arcnet, IO-Link, etc.)
- Enclosure in stainless steel V4A
- Acrylic film coating
- Ex Zone 2/22 - approval







Our product is your solution

Eco-Line

New design and innovative technic

Our new „Eco-Line“ is a fanless and energy-saving multi-touch panel PC. The development focused on low power dissipation, which is achieved by the Intel Celeron J1900 processor with just 10W power consumption and the economical LED backlight.

Slim, powder-coated aluminum enclosure with flush-mounted multi-touch glass front.

The connection area is led out at the rear.



Technical Data

- Glass front with black decor
- Ingress protection IP65 on the front
- 33 mm deep enclosure
- Interfaces, rear: 1 x RS-232 COM1; 2 x USB; 1 x LAN
- 24V DC; Connection via screw terminal
- Rear VESA75 adaptation possible
- Celeron J1900 4 x 2GHz, 2MB L2 cache, 10W TDP
more powerful processors on request
- RAM: 4GB to 8GB DDR3L
- Mass storage: mSATA SSD 8GB to 480GB
- 1 x Gigabit LAN



Display

- Display with LED backlight and touchscreen
- 15.6 "LED TFT, resolution: 1920 x 1080, Full HD
- MTBF 50,000 h
- Brightness: 300 cd / m²
- Contrast: 800: 1
- Viewing angle: 170 ° horizontal / 170 ° vertical
- PCAP touchscreen, multi-touch



Applications





Our product is your solution

Front-mounted Panel-PCs / Monitors

For installation in enclosures or control consoles/panels

Robust, reliable and durable – the key features of our industrial panel PCs and monitors for installation in control consoles/panels, enclosures and building automation applications. Our monitors for mounting have been designed to ensure they can be installed quickly and easily in enclosures or machine fronts. We naturally only include components offering maximum levels of efficiency. In addition, intelligent thermal management ensures balanced temperature conditions in smaller control cabinets. All our front-mounted panel PCs and monitors have been adjusted to the design of our 'S-Line' and 'CS-Line'.

No compromises thanks to modularity

Our product portfolio for embedded applications offers an individual solution system for every user, tailored to performance class, control task complexity and budget. Whether you need 19" rack mounting, front mounting or an embedded PC – our PCs can be equipped with a matching CPU, system interfaces, PSU models and other options. And all available from single custom units right up to large-volume production. Our devices are equipped with an industry-optimised PCAP touch user interface. This means devices can be cleaned while still running and ensures an excellent response for gloved operators, plus excellent luminous transmission and translucency.

We guarantee the straightforward installation of your panel PC

Installing our industrial panel PCs into control panels/consoles or enclosures couldn't be easier. The device is simply slotted into the enclosure's prepared mounting cut-out from the front and the clamps are then placed into the designated recesses and tightened. The pointed ends of the bolts lock against the mounting wall to ensure the device installation is rock solid.







Our product is your solution

Front-mounted Panel-PCs / Monitors



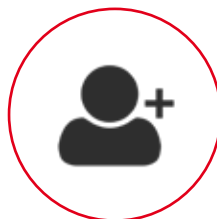
Technical Data

- Custom configuration options
- Active or passively cooled design
- Service-friendly layout
- CPUs up to latest-generation Core i7
- Expandable interfaces
- 230V AC / 24V DC operating voltage
- Starting at 20 watts power consumption
- Various operating systems



Display

- Display sizes: 15", 17", 19" and 21.5" (others on request)
- Resistive or industry-optimised PCAP touch
- Multi-touch 'EagleEtch' screen – anti-glare glass
- Usable while wearing gloves
- Can be cleaned while running
- LED backlight
- High luminous transmission



Options

- RFID scanner
- Euchner scanner
- Bluetooth / WLAN
- Acoustic touch feedback
- Capacitive soft keys – custom layouts and lighting possible
- Conventional buttons, emergency stop
- Uninterruptible power supply
- Resistive touchscreen
- Interface extensions
- Bussystems (Profinet, Arcnet, IO-Link, etc.)







Our product is your solution

Front-mounted Panel-PCs / Monitors

Front-mounted panel PC, fully compatible with 5:4 and 4:3 devices of other premium automation-technology manufacturers

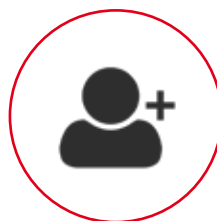
Our panel PCs for front mounting offer full mechanical and port compatibility with the 5:4 and 4:3 devices of premium automation-technology manufacturers, and can be fitted into existing mounting cut-outs/apertures without any mechanical or electrical modification work being necessary.

Our flexibility means we can also customise any models in this device-range to your requirements, whichever specific version you need: single or multi-touch panel PC, rack mounting, front mounting, embedded PC.



Technical Data

- 12", 15" and 19" TFT display
- Resolution: 15" 1024 × 768 pixels, 19" 1280 × 1024 pixels
- Capacitive multi-touch
- CPU from Intel Atom to latest-generation Intel Core i7
- IP65 rating at front
- Front-mounted USB port
- Ports: DVI-D, VGA, USB, RS-232, others on request
- 100–245V AC / 24V DC operating voltage
- Up to two PCI/PCIe slots



Options

- In addition to the standard interfaces, other communication interfaces can also be integrated
- Soft keys
- Profibus
- Profinet
- Windows 10





Our product is your solution

Modular PC Systems

Industrial panel in a robust aluminium enclosure – with modular system components

Thanks to our innovative approach, the system components such as the display, processing unit and power adapter can be replaced at any time – by customers themselves.

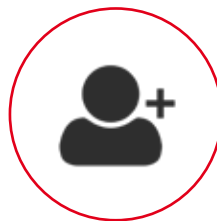
This system also offers individual mounting and configuration options – giving you a device that is perfectly tailored to your requirements.

The rugged aluminium housing is powder-coated and can be locked out against unauthorised access with an customised closure.



Technical Data

- 21.5" LED TFT, resolution 1920 × 1080 pixels
- Industry-optimised PCAP multi-touch screen, glass surface
- Long-term availability of PC components
- Intel 6th generation Core i5-6300U
- Hard disk: 2x SSD 2,5"
- Interfaces: 2x Gbit LAN, 1x RS-422/485, 4x USB3.0, 1x HDMI
- 1x PCIe x1 interface free via riser card
- ARaid controller, incl. hot-swap frame
- Industry-optimised 90–245V AC power adapter



Options

- RFID scanner
- Bluetooth
- Acoustic touch feedback
- Uninterruptible power supply
- Interface expansions
- Rear-mounted split cable gland
- VESA 100 interface



Mobile Industrial PCs / Tablets

Rugged, high-performance and fanless

Mobile panel PCs are becoming more and more common in manufacturing, and often need to handle very harsh environments. We can always offer you the right solution for a range of industry sectors. Mature technology where space is at a premium plus simple user controls and versatile mounting options are just some of our product features. Our transfective displays also offer excellent image quality even in direct sunlight.

Our industrial and tablet PCs are ideal companions when you are out in the field. They are perfectly suited to any industrial application and have been specially designed to handle harsh conditions. A full range of accessories is available for all models shown.

Please request compatibility and availability:

- Mass storage up to 2 TB SSD
- Random access memory up to 16 GB
- Front camera
- Back camera
- 2D Barcode scanner (except DT340)
- Long-Range BT
- 4G/LTE
- GPS (GNSS)
- NFC / RFID Reader (13,56 MHz), UHF-RFID, other on request



DT301XC/X/Y – rugged Tablet, 10,1"

- Robust tablet 10,1"
- Resolution 1920 x 1080
- Brightness DT301Y: 1000 cd/m², other models: 800 cd/m²
- IP65, MIL-STD-810G shock tested, MIL-STD-461F
- Intel® Celeron® Processor 3955U, Intel® Core™ i5/i7 of the 8th generation
- Wi-Fi (2,4 and 5 Ghz), DT301Y: BT 4.2 LE, other models: BT 4.0 LE
- Batteries exchangeable during operation (Hot-Swap)
- Windows 10



DT311Y - rugged Tablet, 11,6"

- Robust tablet 11,6"
- Resolution 1920 x 1080
- Brightness 1000 cd/m²
- IP65, MIL-STD-810G shock tested, MIL-STD-461F
- Intel® Core™ i5/i7 of the 8th generation
- Wi-Fi (2,4 and 5 Ghz), BT 4.2 LE
- Batteries exchangeable during operation (Hot-Swap)
- Windows 10



DT313 - rugged Tablet 13.3"

- Robust 13,3" Tablet
- Resolution 1920 x 1080
- Brightness 1000 cd/m²
- IP65, MIL-STD-810G shock tested
- Intel® Core™ i5/i7 of the 8th generation
- Wi-Fi (2,4 and 5 Ghz), BT 4.2 LE
- Batteries exchangeable during operation (Hot-Swap)
- Windows 10



DT340 - rugged Tablet 14"

- Robust 14" Tablet
- Resolution 1920 x 1080, 4K on request
- Helligkeit 1000 cd/m²
- IP65, MIL-STD-810G shock tested
- Intel® Core™ i5/i7 of the 8. generation
- Wi-Fi (2,4 and 5 Ghz), BT 4.2 LE
- Batteries exchangeable during operation (Hot-Swap)
- Windows 10
- Optional with integrated NVIDIA GeForce® GTX1050 graphic card



Individual solution - Control panel with industrial tablet PC

- Operating station in a slimline design
- Siemens KP32 Integration
- Docking station incl. mechanical mounting
- NFC integrated behind Porsche emblem
- Tablet-PC 11,6" with emblem
- Intel Core i7 8. generation
- 16 GB RAM
- SSD 512GB
- IP65, MIL-STD-810G, MIL-STD-461F

Accessories

The extensive range of accessories for our industrial tablet PCs round off the offer and are ideal when you are out in the field.

- Keyboard
- Digital pen
- Batteries
- Battery charger for 1 or up to 5 batteries
- Docking station
- Wall/vehicle mount cradle
- Car / truck power supply
- Carrying case, shoulder strap, handstrap
- Screen protector





Industrial PCs and Embedded PC Systems

Embedded PC systems for industrial applications

A compact form factor and flexible mounting options are the key features of our industrial box PCs, which can also be termed embedded PCs. Thanks to the wide choice of various components, our product range here is extremely flexible.

All of these can be embedded seamlessly into existing systems for control, signal processing in metrology or in visualisation work. We design each embedded PC from the outset to match its deployment in specialised industrial environments, so as to ensure we can perfectly meet our customers' requirements. All of our industrial box PCs are subjected to a 24-hour burn-in test prior to delivery and can withstand even the most extreme stresses.



19" Rack-Industrie PC

- Many configuration options
- Any ATX motherboard can be installed
- 19" Rack mounting
- Optional for rail guidance



Worker PC

- Wide range of configuration options
- Fanless design
- Two quick-change 2.5 "SSD hard drives
- ARAID (intelligent RAID system) available



Desktop industrial PC

- Customer-configurable
- Compact footprint
- Optimum PC performance
- Any Mini-ITX board can be installed



Industrial box PC

- Customer-configurable with Intel® Core™ i7i5/i3
- Compact footprint
- Optimum PC performance
- Fanless design



DIN rail industry PC

- Individual solutions
- Many configuration options
- Compact footprint
- Optional for horizontal or vertical wall mounting



Box-PC

- Completely passively cooled box - IPC
- Integration of various mainboards in the 3.5"-Format (Intel Atom to Intel Core i7 8th gen.)
- Optional integration of a DC / DC converter or 230V AC power supply
- Opt. switch cabinet mounting (rear wall or book mounting position) with mounting brackets



Embedded Box-PC

- Fanless design
- Wide range of configuration options
- Horizontal and vertical installation
- Raspberry Pi



Mini PC

- High performance in the smallest space
- Fanless design
- Many configuration options







Our product is your solution

Complete Systems

The trend towards individualized products and ever shorter manufacturing times is driving the automation of many industries. With its ready-made control housings, ROSE Systemtechnik has long been creating the ideal conditions for this. By taking over CRE Rösler Electronic GmbH, the company now offers its customers complete HMI solutions from a single source.

CRE products can be found as a new product line “HMI CREations” at ROSE. The „HMI Mechanics” product line includes the classic support arm and control housing range.

HMI CREations manufactures industrial panel PCs, industrial monitors and embedded PCs for numerous industries such as the automotive industry, the food industry as well as logistics and building automation. ROSE HMI CREations & HMI Mechanics offers a wide range of products, ranging from one-off production to large series. Development and production take place in-house, so that perfect quality is always guaranteed.

Innovative technology, elegant design: the industrial panel PCs

Industrial Panel PCs from HMI CREations are available as a standard version or a customer-specific solution that is precisely tailored to the respective application. Both versions have a robust aluminum housing and are available as touch, multitouch or button devices with different display sizes.

Equipment carrier systems: Ergonomic and robust

In recent years, ROSE has increasingly developed from a pure component manufacturer to a system provider. The company has now partially or completely equipped most of its housings with customer-specific electronics. The extensive range of support arm systems made of aluminium, steel or stainless steel also underlines the system character.

HMI systems from ROSE - everything from a single source

With the akquisition of CRE, ROSE customers benefit from a very large range of panel PCs, industrial monitors and equipment rack systems that have the right solution for every application. The comprehensive machining service with individual drillings, paintwork and assemblies makes the all-round carefree package perfect.







Our product is your solution

Customer-specific industrial PCs

Our modular design principle means we can implement your solution flexibly and cost-effectively while offering extensive specialist technical advice. This gives you a direct path to your bespoke solution – and all from a single source, **'Made in Germany'**.

We offer products of a consistently high quality – from individual custom builds to large-volume products runs, and from panel PCs to industrial box PCs.

Our stringent quality control includes burn-in endurance testing with full record-keeping and quality management with end-to-end documentation as standard

Optional equipment and accessories for industrial use

The extensive range of accessories for our panel PCs have been especially developed for industrial use and offers customised configuration for any application. This enables IPCs to be an even better match for their application scenario.

Specially designed keyboards that can be fitted onto or integrated into a panel PC not only make data entry easier but also offer a more ergonomic working environment for operators.

The range of accessories we offer includes a selection of cables, connectors, PSUs and adapters.

From planning and advice to turnkey delivery – we are your trusty travelling companion on the road to Industry 4.0.

- Professional, expert advice and assistance – from the idea to installation
- Immediate, on-site requirements/solution analysis
- Expertise born of long experience
- A shared approach to solution development
- In-house development unit – for rapid implementation of your individual solution
- Cutting-edge technologies and long-term availability of all components
- Flexibility – quick and reliable
- One-stop service provision – including on-site installation if required

We will be happy to provide you with reliable, competent advice to find your ideal solution. Discover the unlimited options for modification at particularly attractive conditions.





Customised Solutions



Special height adjustment system

- Individual stroke of 1000 mm
- VESA connection for Panel PC
- Including 10 ° inclination adapter and rotating coupling
- Continuous equipotential bonding available
- Increased swivel range on the wall joint



Control panel with industrial tablet PC

- Docking station incl. mechanical mounting
- Tablet-PC 11.6"
- NFC integrated behind Porsche emblem
- Siemens KP32 keypad



42" Panel PC

- All-glass front with industrial PCAP touch
- Fanless pc integration
- RFID reader
- Protection class IP65 360°
- Slight design - only 45 mm depth
- Print on the back of glass with company logo



Panel PC in custom enclosure

- Individual aluminium enclosure
- 21,5" Full HD Multitouch Display
- Individual and variable buttonlabels behind glass
- RFID Card Reader and camera behind frontglass
- Emergency off button integrated in frontglass
- VESA 100 attachment for suspension system



13.3" stainless steel industrial Panel PC

- Slimline stainless steel housing with welded tube at rear for internal connections
- Display with LED backlight and touchscreen
- 13.3" in a 16:9 format – 1920 x 1080 pixels
- Intel Celeron J1900, 4x2 GHz
- Hard disk: SSD 128 GB Samsung pro



21.5" Dual Panel PC

- 21.5" Dual display
- Flush PCAP integration
- Side handle
- Floor-side console with keypad
- Push button integration with emergency stop
- Euchner scanner



V4A stainless steel operating terminal

- 19" display
- Customised mechanics
- Connection via HARTING plug connections
- Individual number and arrangement of control devices
- Ingress protection IP65



Support arm lift with industrial Panel PC

- 24" widescreen panel in full HD
- Additional handles on the outer casing
- The pivot arm can be swivelled to either side of a production line
- Support arm lift with rotating-tilting joint







Our product is your solution

Quick-release mechanism „QuickLock“

High availability thanks to patented quick-release mechanism

Production time is money – and downtime due to faults is very expensive. But this can be minimised, thanks to our patented ‘QuickLock’ mechanism. One person working alone and without tools can swap out a panel in 10 seconds: position, lock into place – ready. Mechanically, pedestal or suspension arm mounting is possible, at various angles of pivot and tilt. The PC ports and interfaces are easily accessible in the generously proportioned, lockable terminal compartment, while being securely protected from unauthorised personnel.

The device ID and/or control console configuration data is saved onto a storage medium located in the terminal compartment on the suspension arm system. If the control panel is replaced/reinstalled, this is then re-registered at the corresponding console by data transmission from the storage medium/quick-release mechanism adapter. This ensures that the control panel is always ready to use – thereby avoiding long periods of production downtime.

Benefits of our quick-release adapter

- Can be installed on suspension arm systems in a few seconds – just fit and lock into place
- No tools required
- Anti-theft protection (E1 or other closure) and detent on locking bolt
- Continuously adjustable rotate/tilt function with end stop (20° up/down and 350° left/right)
- One-person panel installation and replacement
- All connections can be pre-installed (depends on suspension arm system)
- Large terminal compartment with various interfaces
- Can be fitted to all 48 mm Ø, GTN II and CP60/40 suspension arms
- Integrated, automatic device identification for panel installation/change
- Additional preconfigured hardware connection options







Control Enclosures

Control and display enclosures for many different applications

In the field of operating and display enclosures, customers can select from six different enclosure systems, and can thus find the best solution for their application:

ROSE provides an individual preparation service for all control enclosures from orders of just one item; this includes, for example

- Individual height, width and depth dimensions
- Preparation of front panel, rear panel and side profiles
- Individual colour finishes to match your CI concept, up to and including individual screen printing
- Equipping to customers' specifications, up to the complete system



One special feature of our aluminium control enclosures is their outstanding thermal conductivity. This property is better by a multiple in aluminium enclosures than in their steel counterparts, with the result that extra cooling elements can in many cases be omitted.





Control enclosures



	SL 4000 (PG 20)	SL 3000 (PG 20)
Product highlights	<ul style="list-style-type: none"> • Modern enclosure system for control and display systems • Flexible size variability in height and width, 3 enclosure depths • Easy mounting of door hinge • Integrated handle system 	<ul style="list-style-type: none"> • Universal control enclosure for automation engineering • Variable size in height, width and depth • Hinged door profile at front and rear • Front panel insertion from front and rear
Technical data		
Material	Profile: DIN EN 573 EN AW-ALMgSi Cast corners: DIN EN AC-AISI 12 Cu 1 (Fe)	Profile: DIN EN 573 EN AW-ALMgSi Cast corners: DIN EN 1706 EN AC-AISI 12 Cu 1 (Fe)
Ingress protection	IP65 to EN 60529	IP65 to EN 60529
Seal	CR or PU foam	CR or PU foam
Surface	Powder coating or natural anodised	Powder coating or natural anodised
Colour	Profile: optional RAL 7035, light grey, or natural anodised Corner element: optional RAL 7035, light grey, or RAL 9007, grey aluminium Special colour on request	RAL 7035, light grey
Temperature range	-30 °C to +80 °C	-30 °C to +80 °C
Approvals		
Mounting depth	55 mm to 270 mm	60 mm to 675 mm
Accessories	Handles Wall holder Aerator set Keyboard drawer Data interfaces	Handles Coupling flange Adapter plate Locking plate Keyboard drawer Data interfaces
Included in delivery	Complete enclosure system incl. corners, seals, fixing elements, rear panel or door, front panel fixing set.	Enclosure body with rear wall, fixing elements, cover profile with corners



Control enclosures




Product highlights

- Enclosure system for control and display fittings
- Variable size available in width and depth
- All-round adaption capabilities for accessories
- Front panel insertion from front and rear

Commander 450

- Stainless steel Commander for industrial controls
- Outstanding price / performance ratio
- Individual handle systems

Technical data

Material	Profile: DIN EN 573 EN AW-AlMgSi Front plate, rear wall: DIN EN 573 EN AW-AlMg3 Corner: DIN EN 1706 EN AC-AISI 12 (Fe)	Stainless steel 1.4301/304 other materials on request
Ingress protection	IP65 to EN 60529	IP65 to EN 60529
Seal	CR seal	VMQ-(Silicone)
Surface	Powder coating	grinded, grain 240
Colour	RAL 7035, light grey Handle tube: powdered RAL 3003, ruby red	
Temperature range	-30 °C to +80 °C	-40°C to +80°C
Approvals		
Dimensions (H x W x D)	155 x 483 mm to 267 x 483 mm in 3 enclosure depth: 90 mm, 120 mm, 195 mm	400 x 300 x 120 mm to 500 x 500 x 200 mm
Mounting depth	80,5 mm, 110 mm, 185 mm	
Accessories	Handle set Coupling flange Control attachment set	Handle / handle set
Included in delivery	Enclosure body with rear panel or door, front panel fixing set, cover profile and T-groove cover	Enclosure with door, handles (order separately) and individual machining for installation and suspension system







Suspension Systems

Ergonomic workplaces through suspension systems

ROSE supplies a large range of aluminium, steel and stainless-steel supporting-arm systems which can be individually tailored to your needs.

The focus here is primarily on the suspended load and the required reach, and also on system styling. ROSE can supply eleven different systems, based on aluminium profiles, steel or stainless-steel tubing, with a load range from 0 to 200 kg and a maximum reach of 3.00 m.

ROSE cuts the profiles/tubes individually to length for you.

The supporting-arm systems are augmented by height-adjustment systems for ergonomic workplace design, up to a maximum suspended load of 60 kg.





Suspension systems



GTS (PG 49.44)

GTN II (PG 49.47)

Product highlights

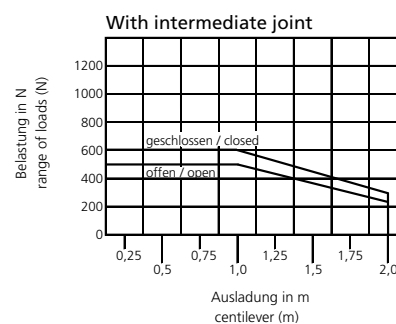
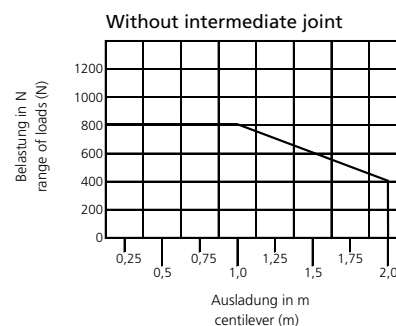
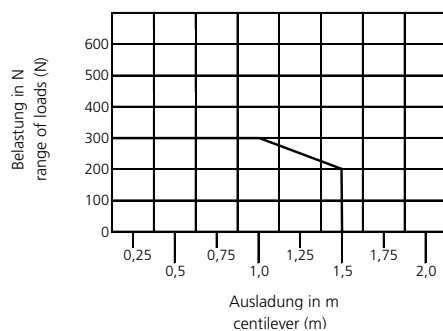
- Aluminium profile suspension system for light/ medium loads up to 30 kg
- Product family GTN / GTS / GTL
- Combined with all Commander systems
- Adjustable version for individual loads

- Design aluminium suspension system
- Closed profile system / profile with free accessible cable duct
- Can be combined with all control enclosures

Technical data

Material	Connecting tube: DIN EN 573 EN AW-ALMgSi Components: DIN EN 1706 EN AC-ALSi 12 (Fe)	Connecting tube: DIN EN 573 EN AW-ALMgSi Components: DIN EN 1706 EN AC-ALSi 12 (Fe) Cover profile: TPE
Ingress protection	IP54 to EN 60529	IP54 to EN 60529
Seal	CR or PU foam	CR or PU foam
Painting	Tube, components: RAL 7035, light grey	Tube, components: RAL 7035, light grey Cover profile: RAL 9005, jet black
Surface	Powder coating	Powder coating
Free cable passage	Connecting tube: 53 x 19 mm System components: 53 x 19 mm	Connecting tube: open 51 x 34 mm Connecting tube: closed 55 x 56 mm System components: 53 x 48 mm
Temperature range	-25 °C to +60 °C	-25 °C to +60 °C
Max. statische Belastung	30 kg/1 m	80 kg/1 m

Load diagram





Suspension systems



Product highlights

GTL (PG 49.62)

- Aluminium profile suspension system for heavy loads
- Can be combined with GTN II suspension system/ heightadjustment system GTV and control enclosures
- Optional adjustment for horizontal alignment of the profile

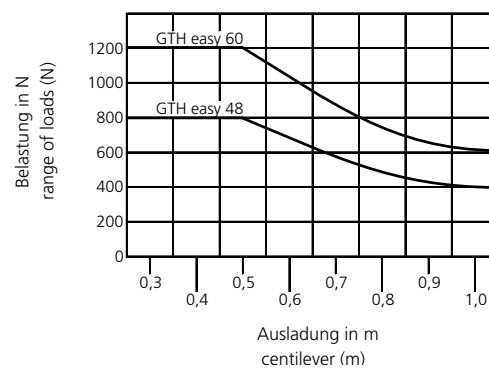
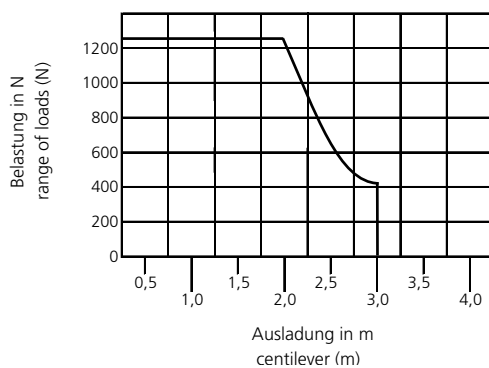
GTH 48 easy / GTH 60 easy (PG 57)

- Compact, slim design
- Significantly reduced installation effort
- Ideal alternative to self-made construction solutions
- Reduction of edges and gaps of the system and less dead space

Technical data

Material	Connecting tube: DIN EN 573 EN AW-ALMgSi Components: DIN EN 1706 EN AC-AISI 12 (Fe)	Tube: Stainless steel 1.4301 System components: Stainless steel 1.4301
Ingress protection	IP54 to EN 60529	IP69 to EN 60529
Seal	CR or PU foam	CR or PU foam
Surface	Powder coating	Tube: grinded, grain 240
Colour	Tube and components: RAL 7035, light grey Cover profile: RAL 9005, jet black	
Free cable passage	Tube and components: Ø 70 mm	GTH 48: 41 mm GTH 60: 53 mm
Temperature range	-25 °C to +60 °C	-25 °C to +60 °C
Max. static load	125 kg/1 m	GTH 48: 80 kg/0.5 m - GTH 60: 120 kg/0.5 m

Load diagram





Height adjustment systems



Product highlights	GTV light (PG 49.84)	GTV 2.0 (PG 49.85)
	<ul style="list-style-type: none"> • Step less adjustment • Adjustable end stops • Adjustable load range • Possible subsequent integration into existing GTN II system 	<ul style="list-style-type: none"> • Very good hovering behavior • Precise adaptation of the load range by users on site • Freely positionable version • Adjustable binding
Technical data		
	Material	Connecting plates: S235 Components: EN 1706 AC-46000DF Cable channel cover sheet: EN 573-3 AW-5754 H22
	Ingress protection	IP54 to EN 60529
	Load range	20 - 60 kg
	Life time	25.000 double strokes
	Colour	Connecting plates: RAL 7016 Cast parts: RAL 7035 Cable channel cover sheet: RAL 7035
	Surface	Powder coating
	Free cable passage	approx. 40 x 30 mm
	Temperature range	0 °C to appr. 80 °C
	System length	1050 mm
	System stroke	400 - 961 mm



Suspension systems



Product highlights

GT 48/2 (PG 49.49)

- Industrial circular tube system for control enclosures
- Modular construction for individual components
- Protected internal cable routing

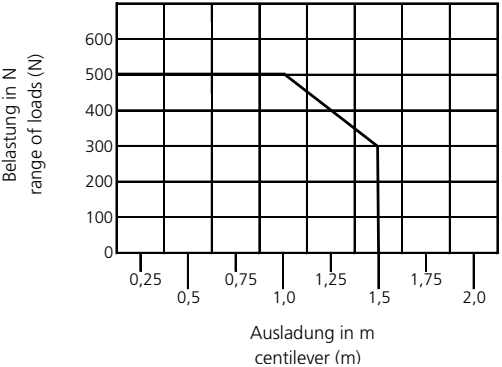
Flat Panel Adapter (PG 50)

- Turn-tilt coupling for the individual connection between the enclosure and ROSE suspension systems
- Optional inclination range of +/- 20°
- On request, we process the adapter individually and, for example, drill holes in the sides of the connection space, e.g. for cable glands

Technical data

Material	Connecting tube: Steel 48 x 4 mm DIN 2393-St. 37 Components: DIN EN 1706 EN AC-AISI 12 (Fe)	Connection compartment: Stainless steel 1.4301 Inclining adjustment: Stainless steel 1.4301 Deckel: ABS
Ingress protection	IP54 to EN 60529	with GTS coupling: IP54 with GTH coupling: IP65
Dichtung		CR or NBR
Surface	Powder coating	Powder coating
Colour	Tube: galvanized Components: RAL 7043, traffic grey B Special colour on request	Connection compartment: RAL 7035, optional special colour Inclining adjustment: RAL 7035, optional special colour Lid: RAL 7021
Max. static load		25 kg
Free cable passage	Connection tube: 40 mm diameter System elements: 40 mm diameter	GTS: 53 x 19 mm GTH: Ø 41 mm

Load diagram





Accessories

Optional equipment and accessories for industrial use

The extensive range of accessories for our panel PCs has been specially developed for industrial use and offers customised configuration for any application. This enables IPCs to be an even better match for their application scenario.

Specially designed keyboards that can be fitted onto or integrated into a panel PC not only make data entry easier but also offer a more ergonomic working environment for operators.

VDU-based workstation. The range of accessories we offer here includes a selection of cables, connectors, PSUs and adapters.

We will be happy to provide you with reliable, competent advice to find your ideal solution.

Discover the unlimited options for modification at particularly attractive conditions.



Tray for keyboard/input elements

Tray with an approx. 20° angle for installation under the display unit, naturally anodised aluminium. The same design as the Panel PC including assembly accessories: M6 bolts, spacer tubes and hook-and-loop tape for affixing the keyboard.



Keyboards

In the field of control technology, we offer a selected range of standard keyboards for specific applications:

- long-stroke industrial keyboard IP65
- Cherry keyboard with integrated trackball
- stainless steel keyboard with integrated trackball



Touchscreen input pen

Touch pens offer more precise operation than fingers, since only the thin tip touches the screen.

- touch pens with holder for resistive touch screens
- aluminium touch pens with holder for capacitive touchscreens



WIFI / Bluetooth

Communicate wirelessly with the control network in the harsh industrial environment via wireless LAN and / or Bluetooth. We integrate modules with the latest industry standard protocols into our panel PCs.



Electronic key system (Euchner)

EKS allows for electronic access management and control of processes and software applications. EKS is an open and freely configurable system with a wide range of interfaces and software tools.



1D / 2D barcode scanner

The built-in scanner is installed in an expansion shaft and can be integrated in the lower part of the S-Line. It has a reading distance of 50 mm to 120 mm and sits splash-proof behind a plastic window.



Inlaid membrane keyboard

For customer-specific operating panels, the front can be equipped with an inlaid membrane keyboard and/or additional user controls. The membranes are printed based on requirements and the mechanical layout of the keyboard.



RFID tag reader

Our tag readers support all important 13.56 MHz and 125 KHz + UHF RFID as well as smartcard systems with up to 70 mm scanning distance.

Supported card systems:

Mifare, Legic, ISO 14443 A/B, ISO 15693, I-Code HITAG





Branch Solutions

The perfect solution for any kind of application

Our industrial PC systems can be found in use anywhere computerised control units are deployed to manage machines, plant and processes. In the context of the Fourth Industrial Revolution, panel PCs, data processing and manufacturing already play a crucial role. The technology is focused on the future and has further potential for innovation in multiple scenarios – whether in the service of energy efficiency, process optimisation in terms of manufacturing intensity or making employees more productive. Industrial and panel PCs have already become an essential part of the enterprise toolset, and their importance is set to grow even further.



Automotive and traffic systems

New project fields, new technologies - our competent automotive team is at your side as a complete interface coordinator during your development project. Benefit from our many years of experience with leading carmakers, from establishing initial contact through to the complete implementation of our equipment as part of your production process – our worldwide service for you.



Food and hygiene

Safety standards are paramount in this industry and demands on technology are especially high. Where production processes or workflows need to meet hygiene standards, the very greatest care is required, since there is a large volume of legislation, rules, regulations and specifications to be accounted for. Our stainless steel panel fulfil IP69 and are therefore especially suitable for this area of usage.



Pharmaceuticals and chemicals

On the surface, digitalisation now seems complete in many sectors within the chemicals industry. Yet the real changes that will become possible by large volumes of data, high-performance processing and new algorithms are still to come: our rugged stainless steel PCs easily meet the stringent requirements of the tough industrial working environment and are certified for use in Ex Zone 2 and 22.



Manufacturing and production

Unexpected downtime has an immediate impact on the efficiency of production plant and systems. Accordingly, reliability and failover protection are absolutely essential for the control panels used in production processes. Thanks to the robust design of our industrial PCs, they can be installed in close proximity to production machinery. Any and all information can be accessed and visualised in real time.



Warehousing and logistics

Whether indoors or outdoors, tough working conditions are typical in logistics and warehousing. We therefore designed our mobile PCs especially for these requirements: all of the information can be viewed and posted while out in the field, meaning that data transfer is always up-to-date. Our PCs can also be installed into industrial trucks, and are entirely unaffected by rough handling, vibration or sudden shocks.



Building automation

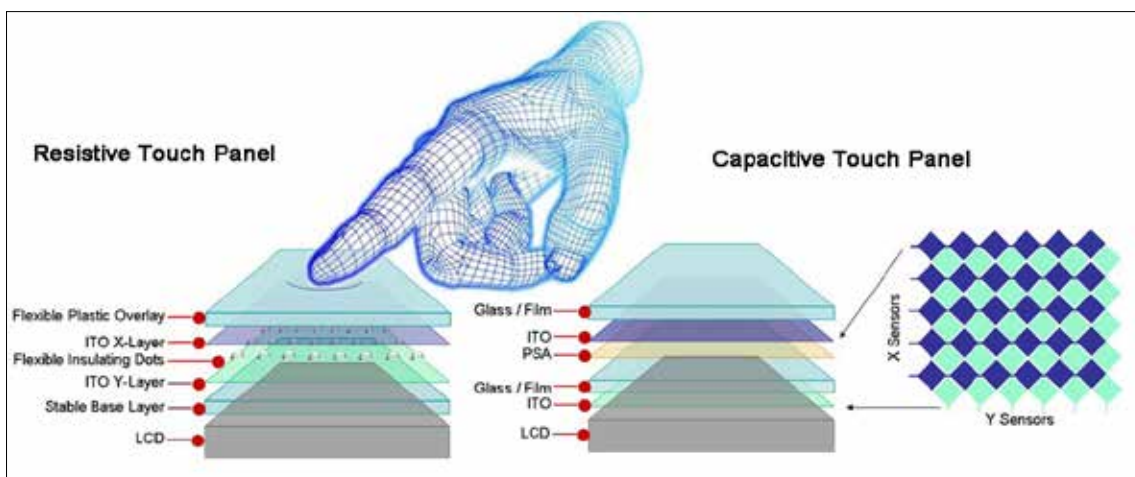
Monitoring, setting and control: a wide range of functions in modern buildings are now managed by building automation systems. Whether used in office buildings, hospitals or conference centres, our built-in panel PCs integrate seamlessly into any architectural surroundings while ensuring the efficient management of building automation for security, heating, lighting or access control systems.



Display Technology

Touchscreen

A touch screen offers simple and intuitive functions for the operation and monitoring of plant and machinery.



Resistive touchscreens react to pressure, which connects two electrically conductive layers at a specific point. This technology ensures easy operation using fingers, gloved fingers and pens. The surface is relatively resistant to dirt and is usually made of plastic.

Industry-optimised PCAP touchscreens are a capacitive touchscreen variant. These touch sensors consist of rows and columns of transparent, conductive material applied to a support layer made of glass or PET. If a voltage is applied to this pattern of rows and columns, a uniform, measurable electrostatic field is generated. If a conductive object, e.g. a finger, approaches the touch surface, the electrostatic field is interrupted at this point. This can be measured and reported on in terms of production capacity changes.

Advantages in comparison to a conventional PCAP touchscreen:

- Unaffected by liquid splashes/spills
- Cleaning is possible during use without activating the touch interface
- Palm rejection: the touch function is not triggered by a palm press – “Ten input points”
- Up to 10 simultaneous finger presses are evaluated by the controller
- Can still be operated while wearing gloves
- High transmission - better light permeability
- Higher EMC resistance



Our product is your solution

Contact



■ **Peter Schiller**

Sales Manager HMI CREations /
Key Account Manager Automotive

Telephone: +49 48 26 - 3 76 66-36
E-Mail: p.schiller@cre-electronic.de



■ **Michael Bieg**

Dipl.-Ing. (FH)
Technical Sales Industry

Telephone: +49 48 26 - 3 76 66-48
E-Mail: m.bieg@cre-electronic.de



■ **Martin Cordes**

Key Account Management
Automotive

Telephone: +49 48 26 - 3 76 66-46
E-Mail: m.cordes@cre-electronic.de



■ **Beatrice Kahlki**

Technical Sales Industry

Telephone: +49 48 26 - 3 76 66-43
E-Mail: b.kahlki@cre-electronic.de



■ **Patrick Krohn**

Service & Support

Telephone: +49 48 26 - 3 76 66-60
E-Mail: p.krohn@cre-electronic.de



■ **Jochen Lindemann**

Dipl.-Ing.
Key Account Manager Automotive

Telephone: +49 173 2944012
E-Mail: jochen.lindemann@rose-pw.de



ROSE Systemtechnik GmbH
Hohenlockstedt Facility
CRE-Allee 1
D-25551 Hohenlockstedt
Fon +49 4826 37666 0
E-Mail hmicreations@rose-pw.de

ROSE Systemtechnik GmbH
Erbeweg 13-15
D-32457 Porta Westfalica
Fon +49 571 50 41 0
E-Mail rose@rose-pw.de

Web www.rose-systemtechnik.com



A Phoenix Mecano Company